

Tables

Eiffel



A table that is its own base. Eiffel dominates the scene, sleek and elegant. It has a stoneware or lacquered glass top, with a fixed round or oval shape, the latter also in an extendable version.



CROSS TABLE BASE

Eiffel is a table with crossed legs composed of thin metal blades arranged to facilitate the movements of the sitter. This practicality is maintained even in the case of the version with an extendable oval top because the two extensions are inserted at opposite ends. The metal blades lend dynamism and value to an often less visible part as is the base.



REFINED EXTENSIONS

Eiffel's extensions are a testament to Dallagnese's attention to valuable details. They are bilia extensions, meaning the vein of stoneware continues precisely on them as well, without aesthetic interruption. They operate through a mechanism inserted under the table top, made of metal with a black finish.



EIFFEL ROUND VERSION

The Eiffel round table with fixed top is perfect for smaller rooms and has a feature all its own. The metal base is formed not only by the characteristic metal blades, but encloses and supports them from below with a circle that echoes the shape of the top and makes the whole more harmonious. To match, there is also the optional swivel pass-through top, made of wood with a sloping perimeter edge.



COORDINATING STYLES

Eiffel is striking for the angular lines of its base combined with the rounded lines of its top. This allows one to follow one's own taste: more warmth in the soft forms of the Supernova chair or more rigor with the Katana sideboard, which, however, allows a glimpse of a cozy Hull armchair in the background.



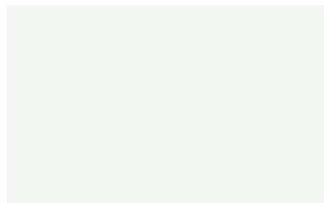
FINISHES

How do you envision your Eiffel table? Start by discovering the finishes available for the top and base.

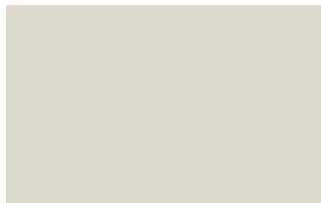
Lacquers

MATT LACQUERS

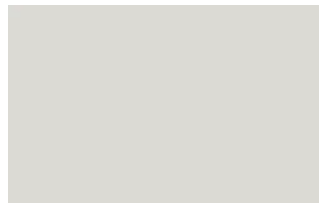
Matt lacquers



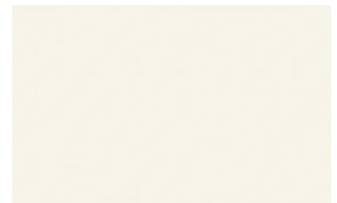
Bianco



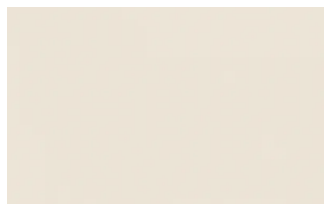
Ghiaccio



Sabbia



Panna



Crema



Grigio seta



Grigio perla



Light grey



Fior di loto



Giallo senape



Tortora



Canapa



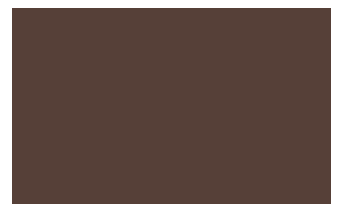
Corda



Dark grey



Terracotta



Moka



Rosso bordeaux



Rosso



Rosa cipria



Bruciato



Carta da zucchero



Grigio blu



Verde pallido



Verde malva



Grigio aston



Celeste



Turchese



Grigio Garda



Blu cobalto



Oceano



Grigio antracite

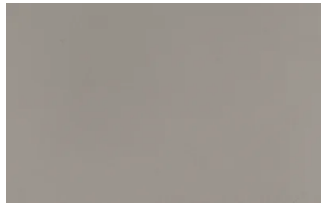


Nero

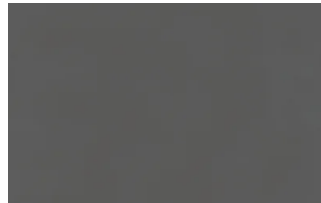
Metallic matt lacquers



Titanio



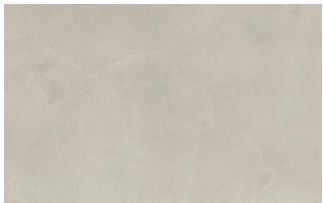
Nichel



Piombo

UP SURFACES

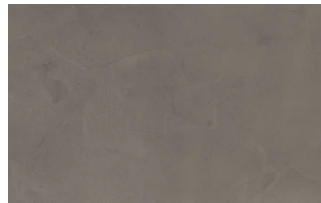
Concrete effect lacquers



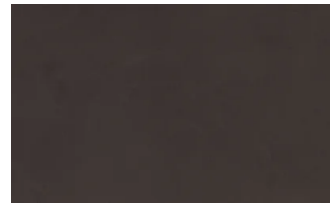
Perla



Argilla

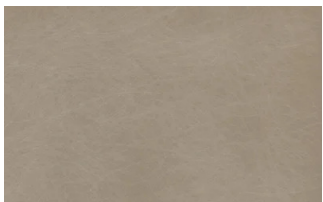


Grafite



Lava

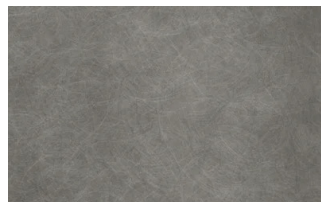
Metal effect lacquers



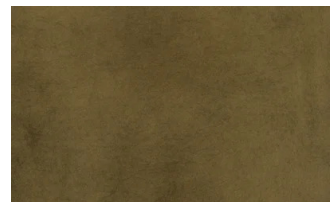
Nichel



Piombo



Titanio



Ossido ottone



Ossido bronzo

Wood

WOODS 1

Woods 1



Natural oak



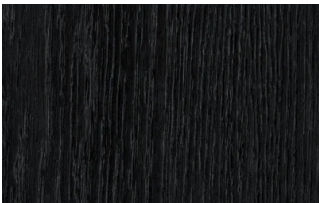
Visone oak



Cenere oak



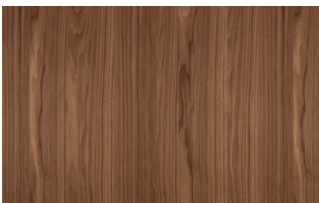
Castoro oak



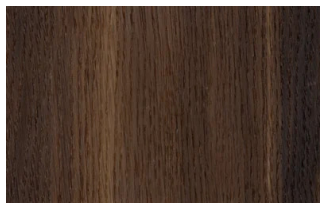
Carbone oak

WOODS 2

Woods 2



Canaletto walnut

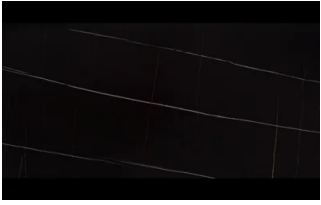


Heat-treated oak

Stoneware

STONEWARE

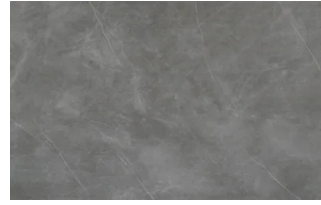
Matt stoneware



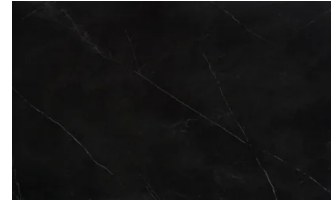
Azalai nero



Jasper moka



Storm grigio



Storm nero

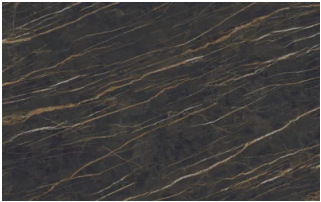


Senda grigio



Pacific bianco

Glossy stoneware



Noir desir



Calacatta oro

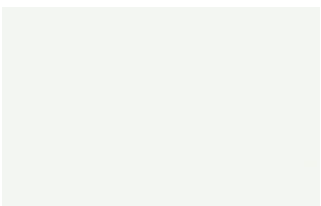


Breche capraia

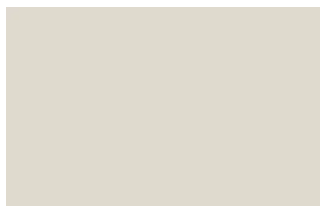
Glasses

LACQUERED GLASSES

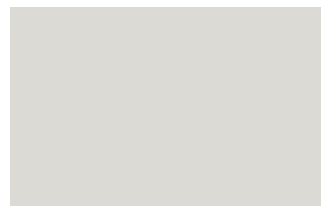
Lacquered glasses



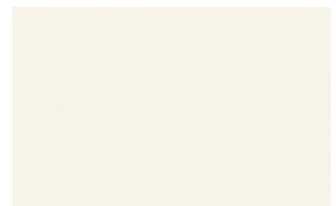
Bianco



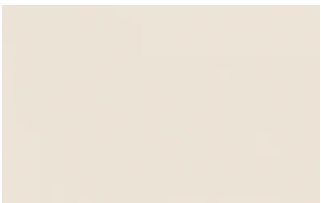
Ghiaccio



Sabbia



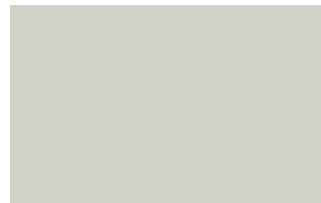
Panna



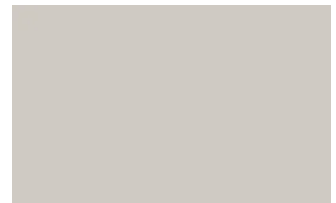
Crema



Grigio seta



Grigio perla



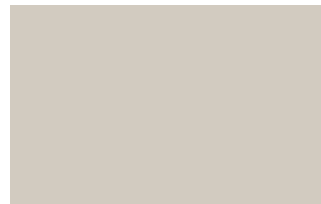
Light grey



Fior di loto



Giallo senape



Tortora



Canapa



Corda



Dark grey



Terracotta



Moka



Rosso bordeaux



Rosso



Rosa cipria



Bruciato



Carta da zucchero



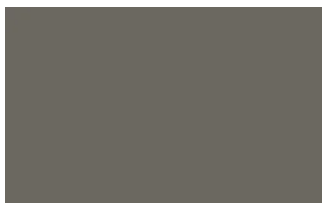
Grigio blu



Verde pallido



Verde malva



Grigio aston



Celeste



Turchese



Grigio Garda



Blu cobalto



Oceano



Grigio antracite



Black

Metals

METALS 1

Metals 1



Black



Titanium



Brown

METALS 2

Metals 2



Antiqued brass