

Wardrobes

Freccia



A hinged door with integrated handle that is very versatile because, depending on the chosen finish, you can change the style of the wardrobe - minimal, classic or contemporary with flair. Freccia always manages to give character to the room.



HANDLE INTEGRATED IN DOOR

The metal handle is integrated in the door characterised by a soft, light vertical groove in its lower section that accompanies the handle itself. In the pictures, doors in corda matt lacquered and antiqued brass metal handle.



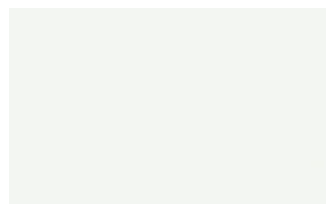
FINISHES

Discover now all the available finishes to customize your Arrow hinged door closet.

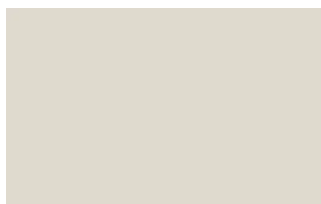
Lacquers

MATT LACQUERS

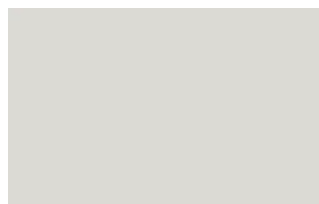
Matt lacquers



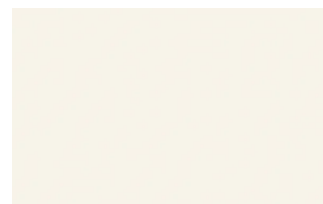
Bianco



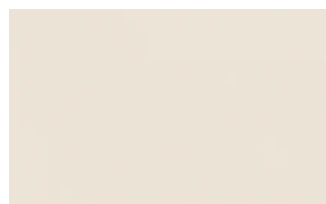
Ghiaccio



Sabbia



Panna



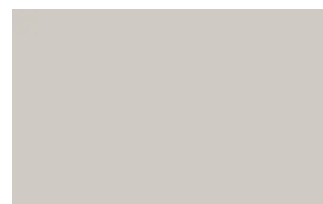
Crema



Grigio seta



Grigio perla



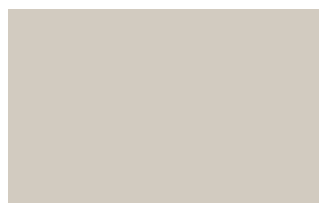
Light grey



Fior di loto



Giallo senape



Tortora



Canapa



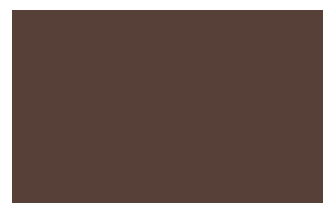
Corda



Dark grey



Terracotta



Moka



Rosso bordeaux



Rosso



Rosa cipria



Bruciato



Carta da zucchero



Grigio blu



Verde pallido



Verde malva



Grigio aston



Celeste



Turchese



Grigio Garda



Blu cobalto



Oceano



Grigio antracite

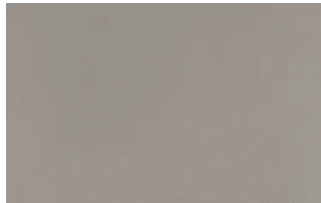


Nero

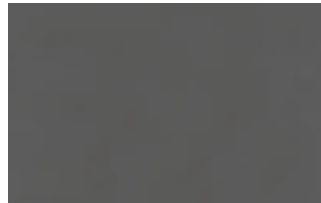
Metallic matt lacquers



Titanio



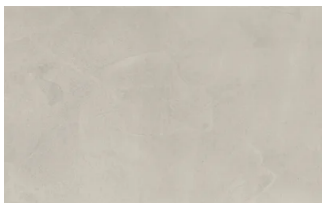
Nichel



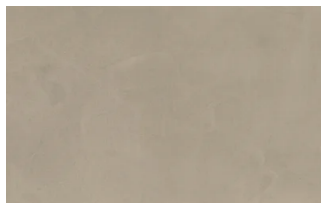
Piombo

UP SURFACES

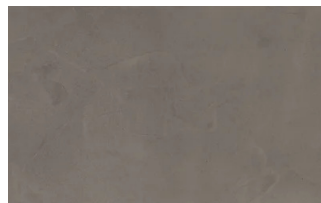
Concrete effect lacquers



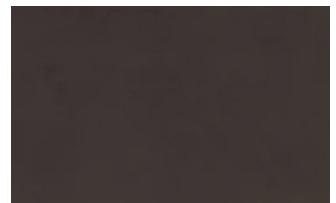
Perla



Argilla

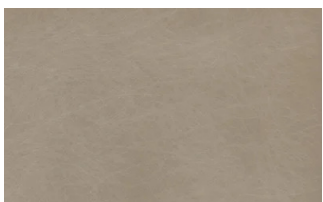


Grafite



Lava

Metal effect lacquers



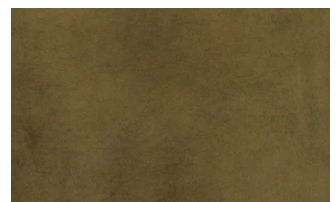
Nichel



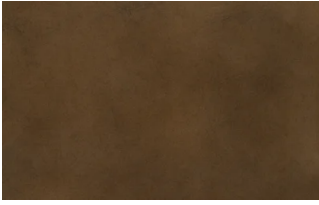
Piombo



Titanio



Ossido ottone



Ossido bronzo

Textured finishes

TEXTURED FINISHES

Textured finishes



Alabama walnut



Heat-treated oak



Quarzo



Avena



Lino