

BONALDO

Aureo

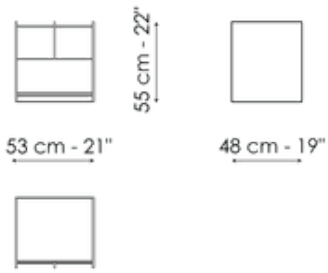
Designer: Matteo Nunziati



The Aureo collection, consisting of a drawer chest and bedside table designed by Matteo Nunziati, is inspired by the mathematical/geometric concept of the Golden Ratio: a system on which the proportion of all spaces dedicated to human life is based, with the intent of creating a balanced, yet functional standard. The Aureo bedside table and matching dresser are simple, single-block pieces, partitioned by the handle which divides them into sections. The simple, elegant shapes and details, like the ceramic top and metal handle, are offset by a contemporary design with traditional undertones conveyed by its minimalism and purity.



Data sheet

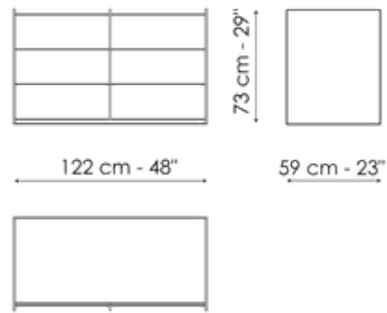


Aureo bedside table

Width: 53cm

Depth: 48cm

Height: 55cm



Aureo drawer chest

Width: 122cm

Depth: 59cm

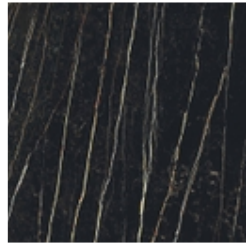
Height: 73cm

Finishes

Top

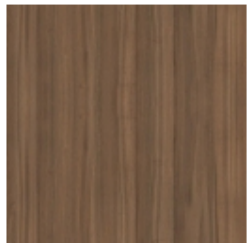


Silk finish ceramic
Calacatta macchia vecchia



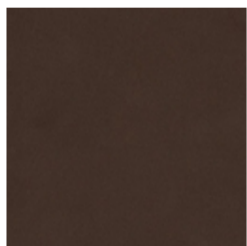
Mat ceramic
Laurent

Drawers



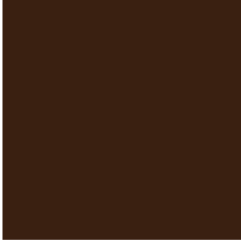
Veneered wood
Walnut Canaletto

Handle



Painted metal
Mat bronze

Lateral side



Lacquered wood

Mat bronze

Materials, fabrics, leathers, colors and finishes are approximate and may slightly differ from actual ones. You can find the complete collection of Bonaldo fabrics and leathers on the website <https://bonaldo.biz>