

# BONALDO

## Bahia

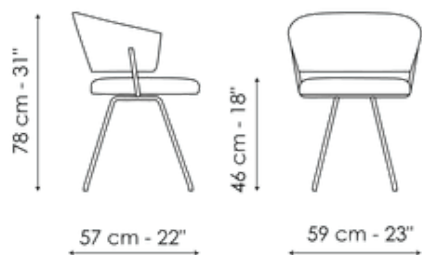
Designer: Mauro Lipparini



The assembly of curved shapes and simple tubular metal elements creates a balanced shape, which is ideal both in residential settings and in smart contract environments such as offices, waiting rooms and hotel lobbies. The main characteristic of Bahia is the curved backrest that extends forward in a single line, allowing the arms to rest freely while enveloping the user's back for maximum comfort. Comfortable from the first glance, thanks to its organic shapes, the collection is also characterised by slender legs in metal, flexing outwardly: and the frame, thin but rigorous, that highlights through contrast the sinuousness of the backrest and seat. The Bahia dining chair is upholstered in leather, eco-leather or fabric.



# Data sheet



## **Bahia**

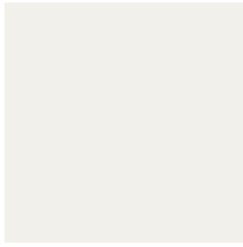
Width: 59cm

Depth: 57cm

Height: 78cm

# Finishes

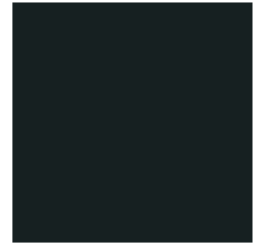
## Legs



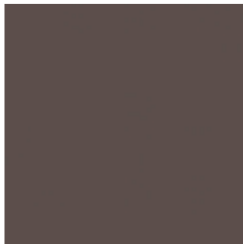
**Painted metal**  
Mat white



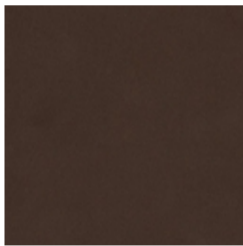
**Painted metal**  
Mat dove grey



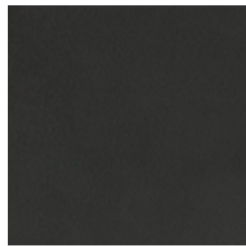
**Painted metal**  
Mat black



**Painted metal**  
Mat brown



**Painted metal**  
Mat bronze



**Painted metal**  
Mat lead



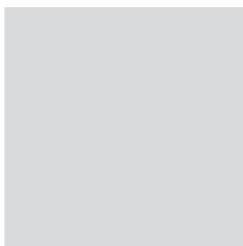
**Painted metal**  
Mat copper



**Painted metal**  
Mat brass



**Painted metal**  
Mat pearl gold



**Metal finish**  
Chromed



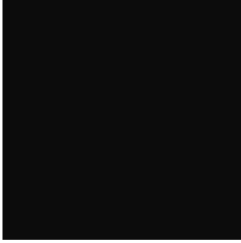
**Metal finish**  
Burnished



**Metal finish**  
Clouded chrome



**Metal finish**  
Brown nickel



**Metal finish**  
Dark nickel

---

Materials, fabrics, leathers, colors and finishes are approximate and may slightly differ from actual ones. You can find the complete collection of Bonaldo fabrics and leathers on the website <https://bonaldo.biz>