

# BONALDO

## Belt & Cross

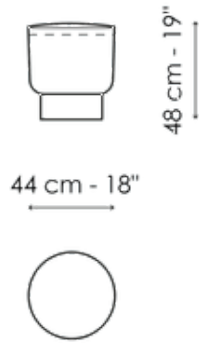
Designer: Alain Gilles



The padded top section is the same in both Belt and Cross modern footstools, with no straight lines but just curved surfaces that gently complement each other, gracefully floating on their base. They are distinguished by their bases, which give each of them a distinct personality: the Belt pouf's round metal base plays with the concept of stability, while the Cross's cross-shaped wooden base is the detail that makes this accessory immediately recognisable. While their similarities make them ideal for pairing together, like two members of the same family with opposing personalities that complement each other, it is their differences and the variety of possible combinations that create a dynamic, lively and constantly changing environment.

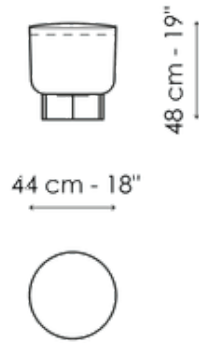


# Data sheet



## Belt

Width: 44cm  
Depth: 44cm  
Height: 48cm

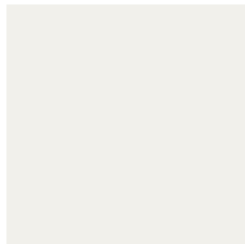


## Cross

Width: 44cm  
Depth: 44cm  
Height: 48cm

# Finishes

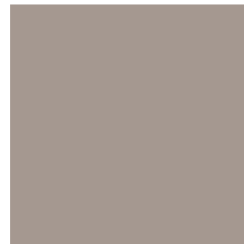
## Base - Belt



**Painted metal**  
Mat white

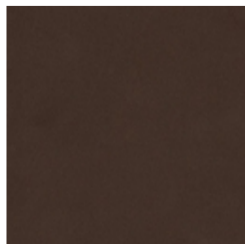


**Painted metal**  
Mat black

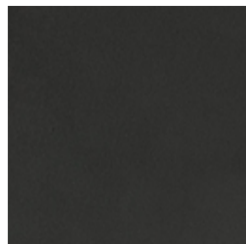


**Painted metal**  
Mat dove grey

**Painted metal**  
Supreme anthracite



**Painted metal**  
Mat bronze



**Painted metal**  
Mat lead



**Painted metal**  
Mat pearl gold



**Metal finish**  
Clouded chrome



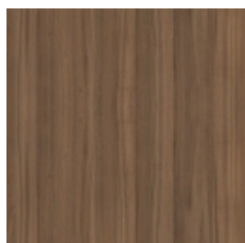
**Metal finish**  
Brown nickel



**Metal finish**  
Dark nickel

---

## Base - Cross



**Veneered wood**  
Walnut Canaletto



**Veneered wood**  
Coal ash