

BONALDO

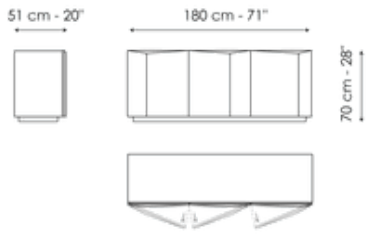
Bernois

Designer: Roberto Paoli



Bernois is the model of the modern geometric sideboard, focused on volumetric and formal simplicity, and enriched thanks to the refinement of a number of small stylistic variations. Roberto Paoli's design is based on the perceptive effects generated by a slight raised relief pattern of the doors: a sequence of vertical "folds" that generate an iridescent interplay of chiaroscuro. The appearance of the furniture thus changes according to the light and the observer's point of view, in line with an aesthetic idea that interprets the dynamic style of contemporary life.

Data sheet

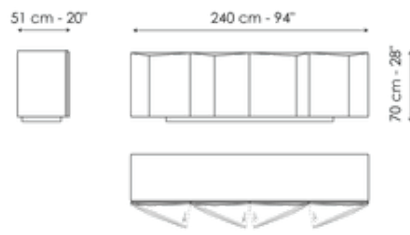


Bernois 180

Width: 180cm

Depth: 51cm

Height: 70cm



Bernois 240

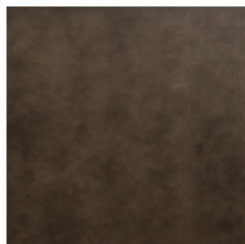
Width: 240cm

Depth: 51cm

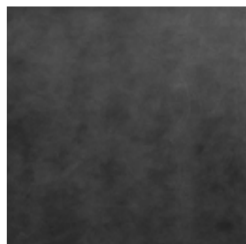
Height: 70cm

Finishes

Doors



Pantographed wood
Brushed bronze



Pantographed wood
Brushed lead

External structure

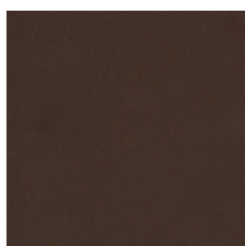


Lacquered wood
Mat bronze

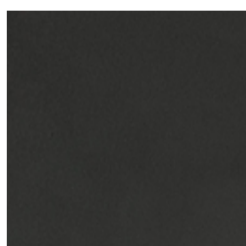


Lacquered wood
Mat lead

Base



Painted metal
Mat bronze



Painted metal
Mat lead

Materials, fabrics, leathers, colors and finishes are approximate and may slightly differ from actual ones. You can find the complete collection of Bonaldo fabrics and leathers on the website <https://bonaldo.biz>