

# **BONALDO**

## Blocco Sideboard

Designer: Alain Gilles



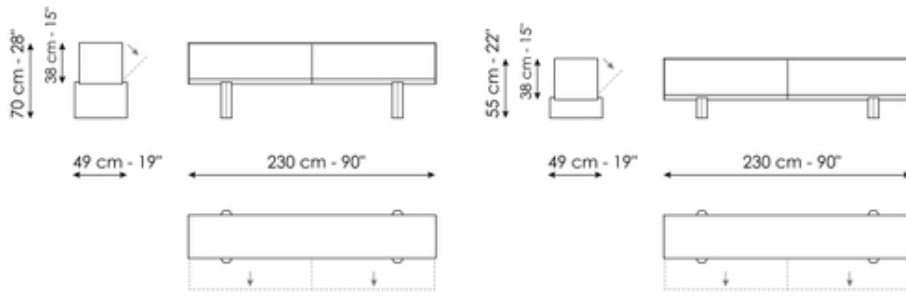
Designed by Alain Gilles, the Blocco collection takes shape from the idea of a large volume resting on two supports, like a precious object on display.

The design brings together contrasting geometries: the rigorous linearity of the horizontal block is set against supports with soft, solid forms, which, in their presence and proportions, recall small pillars.

Blocco sideboard is the most substantial and, at the same time, the most essential piece in the collection. The base is available in two different heights, one lower and one more slender, redefining the visual balance of the whole. The distinctive flap doors are designed to ensure easy and practical opening.

Blocco sideboard is made of glossy lacquered wood, available in glossy brown or glossy grey.

# Data sheet



## Blocco Sideboard

Width: 230cm

Depth: 49cm

Height: 70cm

## Blocco Sideboard low

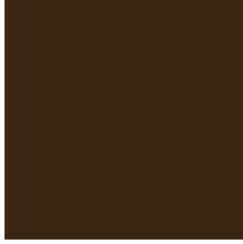
Width: 230cm

Depth: 49cm

Height: 55cm

# Finishes

## Frame



**Glossy lacquered wood**

Glossy brown



**Glossy lacquered wood**

Glossy grey

---

Materials, fabrics, leathers, colors and finishes are approximate and may slightly differ from actual ones. You can find the complete collection of Bonaldo fabrics and leathers on the website <https://bonaldo.biz>