

# BONALDO

## Diver

Designer: Mauro Lipparini

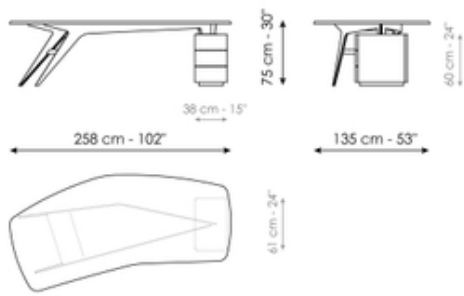


The Diver executive desk encompasses the concepts of momentum and grace that are evident in the choice of name: as the body of a diver spins with synchronic dynamism in space, so the overall stability of the desk appears, with clear reference to the artistic-architectural movement of constructivism, in a clear perception of dynamism and geometric figures comprising linear yet soft features which become harmonious counterpoints of solids and voids.

The top has a slightly curved perimeter to allow comfortable use of the support space while the small and slightly rounded chest of drawers is the pillar of the entire system on which the clean metal legs with their different sectioned proportions are hinged. Diver is a highly impressive executive desk, with indications and material combinations of refined sobriety.



# Data sheet



## Diver

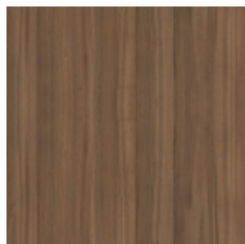
Width: 258cm

Depth: 135cm

Height: 75cm

# Finishes

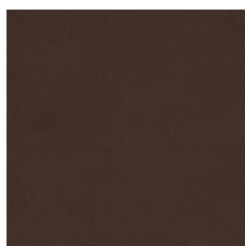
## Top and office drawer unit



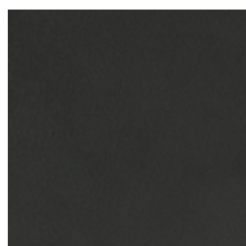
**Veneered wood**  
Walnut Canaletto

---

## Base



**Painted metal**  
Mat bronze



**Painted metal**  
Mat lead

---

Materials, fabrics, leathers, colors and finishes are approximate and may slightly differ from actual ones. You can find the complete collection of Bonaldo fabrics and leathers on the website <https://bonaldo.biz>