

BONALDO

Dorian

Designer: Spazioameno

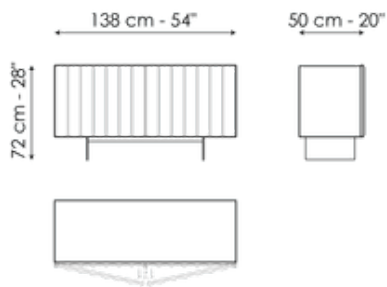


The signature feature of the Dorian contemporary sideboard is the wide vertical groove highlighted in its doors. The sense of movement thus created by the doors of the Dorian sideboard breaks up the linearity of the wall on which it rests, thus adding visual appeal to the intrinsic function of the sideboard.

The doors and frame of this sideboard are made of wood, a material which adds elegance to the overall look, painted in white, bronze or lead finishes. The base is available in the version with two feet for a lighter visual effect or in the version with a plinth for a more compact look.



Data sheet

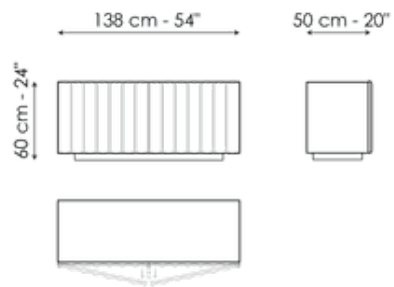


Dorian 138

Width: 138cm

Depth: 50cm

Height: 72cm

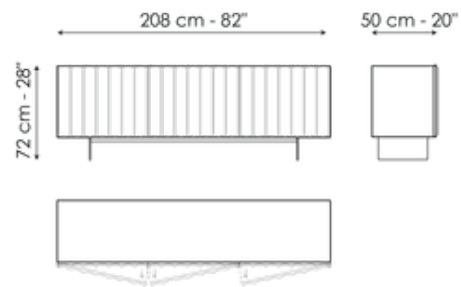


Dorian 138

Width: 138cm

Depth: 50cm

Height: 60cm

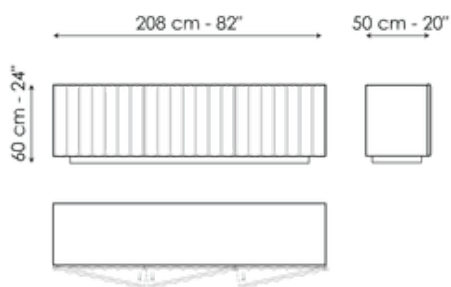


Dorian 208

Width: 208cm

Depth: 50cm

Height: 72cm



Dorian 208

Width: 208cm

Depth: 50cm

Height: 60cm

Finishes

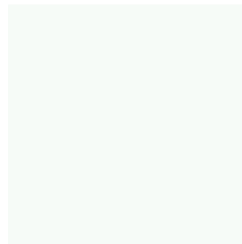
External structure and doors



Lacquered wood
Mat bronze

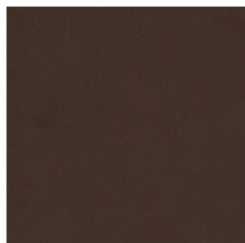


Lacquered wood
Mat lead

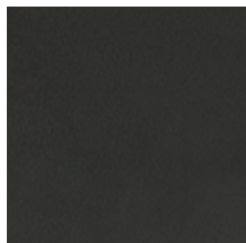


Lacquered wood
Mat white

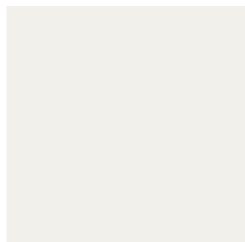
Base / Feet



Painted metal
Mat bronze



Painted aluminium
Mat lead



Painted metal
Mat white

Materials, fabrics, leathers, colors and finishes are approximate and may slightly differ from actual ones. You can find the complete collection of Bonaldo fabrics and leathers on the website <https://bonaldo.biz>