

BONALDO

Filly too, Filly up too

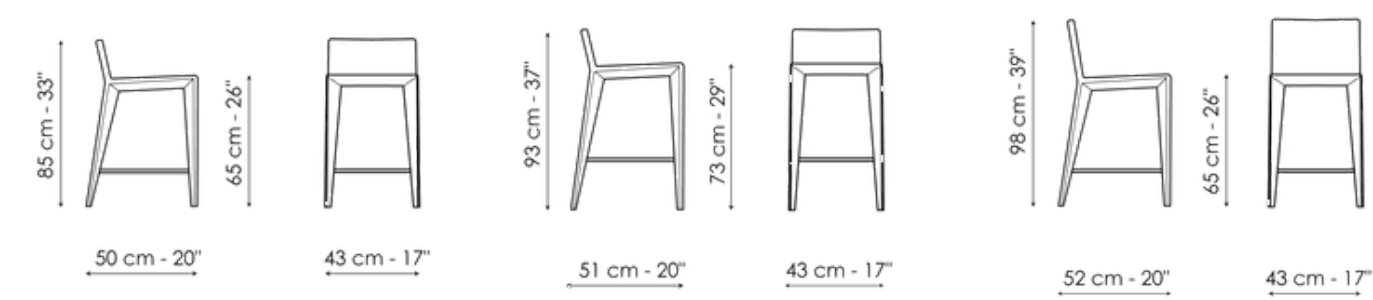
Designer: Bartoli Design



Available in two different sizes and in variants with low backrest (Filly too) or high backrest (Filly up too), it is a stool that can meet the needs of functionality and comfort of even the most demanding people. In the version upholstered entirely in fabric, leather, eco-leather or emery leather, it shows a more understated face; instead, it reveals a more dynamic look in the 65-centimeter-high variant with the original metal legs visible. In addition to the stool, the Filly collection also offers the following versions, for a functional and aesthetically consistent outcome: a chair with a low backrest (Filly), with a higher backrest for increased comfort (Filly up) with a wider and more generous seat (Filly large), with a high backrest and large seat (Filly large up), or with armrests (Miss Filly and Miss Filly up). In this way, it is possible to choose the model that best suits individual needs without giving up Filly's unmistakable style.



Data sheet



Filly too H 65

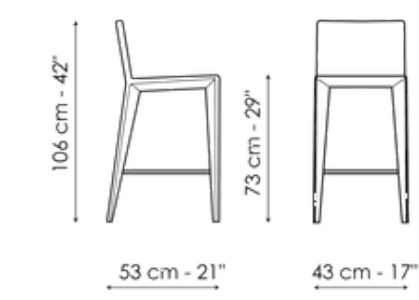
Width: 43cm
Depth: 50cm
Height: 85cm

Filly too H 73

Width: 43cm
Depth: 51cm
Height: 93cm

Filly up too H 65

Width: 43cm
Depth: 52cm
Height: 98cm

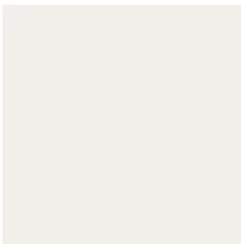


Filly up too H 73

Width: 43cm
Depth: 53cm
Height: 106cm

Finishes

Legs



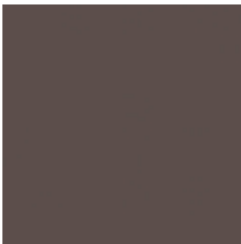
Painted metal
Mat white



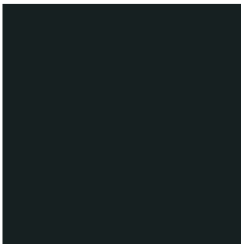
Painted metal
Mat dove grey



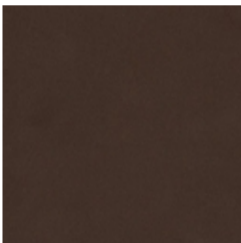
Painted metal
Supreme anthracite



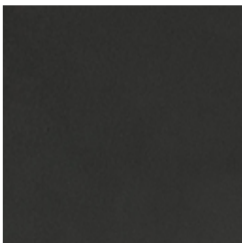
Painted metal
Mat brown



Painted metal
Mat black



Painted metal
Mat bronze



Painted metal
Mat lead



Painted metal
Mat pearl gold

Materials, fabrics, leathers, colors and finishes are approximate and may slightly differ from actual ones. You can find the complete collection of Bonaldo fabrics and leathers on the website <https://bonaldo.biz>