

# **BONALDO**

## Flatiron coffee table

Designer: Mauro Lipparini

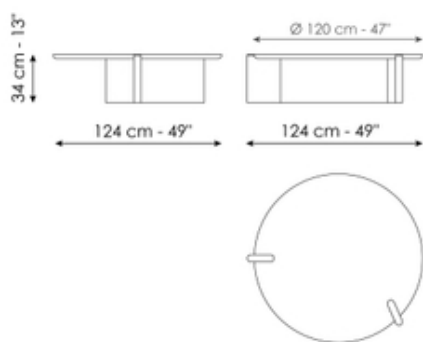


The Flatiron coffee tables by Mauro Lipparini explore the concept of fluidity of lines. The design fits into the architectural language used by this family of tables and desks in which the softness of the shapes is reworked with expressive coherence: the legs, consisting of two vertical panels, are arranged asymmetrically, amplifying the relationship between aesthetics and function.

The shape of the top adds dynamism to the structure, giving the table a fluid movement that enhances its geometric purity. The choice of proportions, together with the simplicity of the volumes, guarantees a balance that enhances the spatial composition.

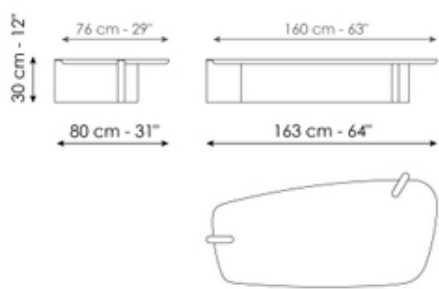
The versatility of the collection is expressed through the possibility of using the tables in pairs, creating configurations that either enter into dialogue with the surrounding environment, or which act individually, where each element takes on an independent sculptural value. Available in two heights and with round or trapezoidal tops, the Flatiron coffee tables adapt to a wide variety of different design scenarios, shaping the space in an entirely natural way.

# Data sheet



## Flatiron coffee table 120

Width: 124cm  
Depth: 124cm  
Height: 34cm

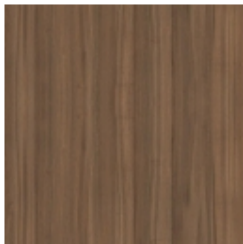


## Flatiron coffee table 160

Width: 163cm  
Depth: 80cm  
Height: 30cm

# Finishes

## Top



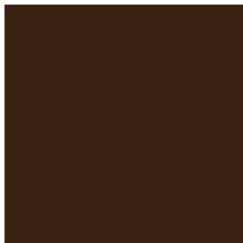
Veneered wood  
Walnut Canaletto



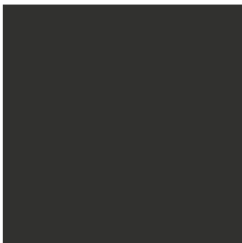
Veneered wood  
Coal oak

---

## Base and Top edge



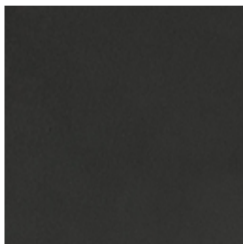
Lacquered wood  
Mat bronze



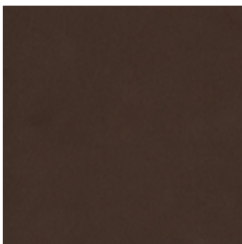
Lacquered wood  
Mat lead

---

## Insert



Painted metal  
Mat lead



Painted metal  
Mat bronze

---

Materials, fabrics, leathers, colors and finishes are approximate and may slightly differ from actual ones. You can find the complete collection of Bonaldo fabrics and leathers on the website <https://bonaldo.biz>