

BONALDO

Lupino

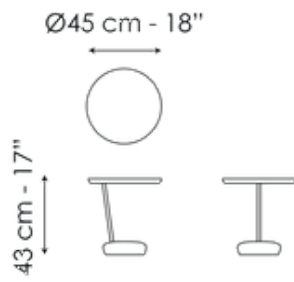
Designer: Mauro Lipparini



The table tops are made from discs of ash wood, supported by a lead-painted metal pipe. All of this rests on a base in marble or cement, which evokes the solid, stable shape of a rock. The lasting image of the Lupino small modern coffee table is one of asymmetrical contrast between the imposing base, the sleek body and the disc that forms the table top, emphasized by the elegant matching of different materials.



Data sheet

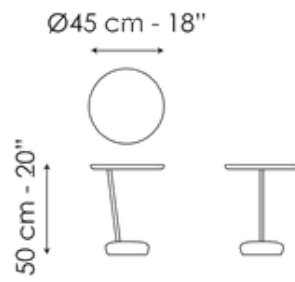


Lupino H 43

Width: 45cm

Depth: 45cm

Height: 43cm



Lupino H 50

Width: 45cm

Depth: 45cm

Height: 50cm

Finishes

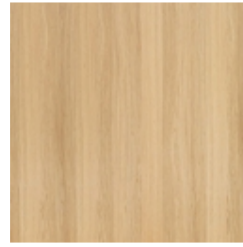
Top



Solid wood
Walnut painted ash

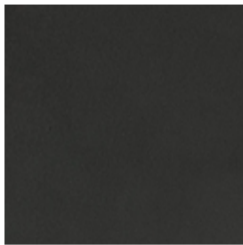


Solid wood
Coal ash

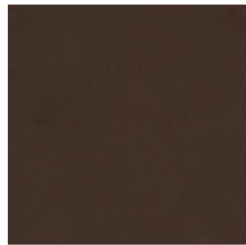


Solid wood
Natural ash

Rod



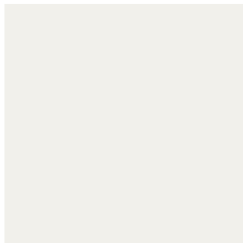
Painted metal
Mat lead



Painted metal
Mat bronze



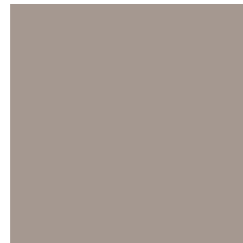
Painted metal
Mat pearl gold



Painted metal
Mat white

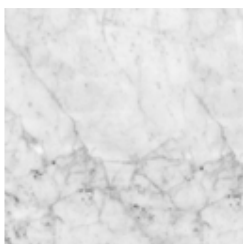


Painted metal
Supreme anthracite

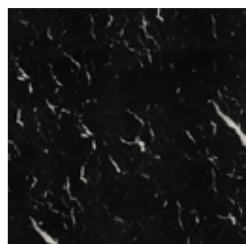


Painted metal
Mat dove grey

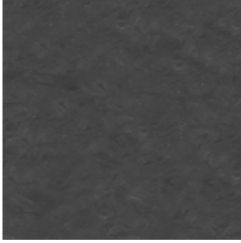
Base



Marble
Carrara



Marble
Marquinia



Composite cement
Anthracite grey



Composite cement
White

Materials, fabrics, leathers, colors and finishes are approximate and may slightly differ from actual ones. You can find the complete collection of Bonaldo fabrics and leathers on the website <https://bonaldo.biz>