

BONALDO

Olos bergère

Designer: Mauro Lipparini

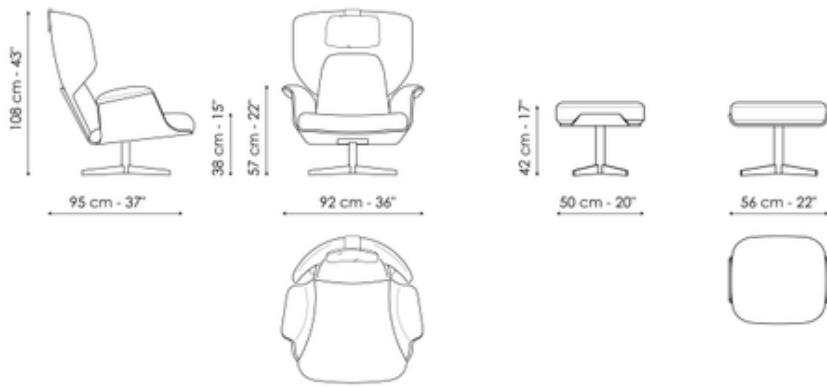


The Olos bergère armchair combined with the Olos footstool complements the Olos collection helping to make it both coordinated and harmonious.

The new bergère design armchair offers considerable levels of relaxation, characterized by contours that indicate a lifestyle that is elegant, rigorous, serene and casual all at the same time, presenting a reinterpretation of mid-century modern design that reminds us of the authenticity of curved lamellar woodworking. Like a protective shell, the gentle smoothness of the curves of the supporting wooden frame combines with the sinuous roundness of the padding, making the generous level of comfort on offer evident at first sight, welcoming you enticingly with its essential forms.



Data sheet



Olos bergère

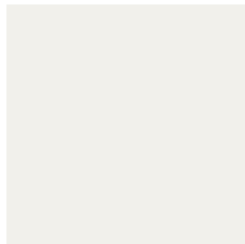
Width: 95cm
Depth: 92cm
Height: 108cm

Olos footrest

Width: 50cm
Depth: 56cm
Height: 42cm

Finishes

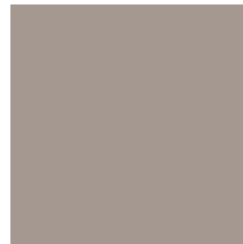
Base



Painted metal
Mat white



Painted metal
Mat black



Painted metal
Mat dove grey



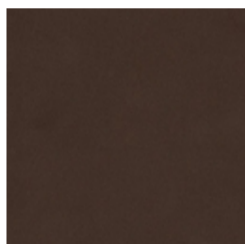
Metal finish
Brown nickel



Metal finish
Dark nickel



Metal finish
Clouded chrome



Painted metal
Mat bronze



Painted metal
Mat lead



Painted metal
Mat pearl gold

Materials, fabrics, leathers, colors and finishes are approximate and may slightly differ from actual ones. You can find the complete collection of Bonaldo fabrics and leathers on the website <https://bonaldo.biz>