

BONALDO

Olos

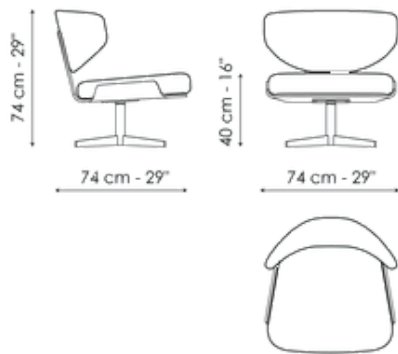
Designer: Mauro Lipparini



The Olos armchair, designed by Mauro Lipparini, represents the continuous experimentation between aesthetics and function and between balance and self-promotion. The shell is made of curved laminated wood, featuring a sinuous and pared-back design, and it is supported by the central metal swivel leg. The padded backrest almost wraps the seat in an embrace. The shape of Olos is a tribute to organic design, re-proposing that sense of humanity and naturalness with which we relate to the objects around us when we use them with captivating ease. The wooden armchair fits perfectly in both residential and contract spaces thanks to its distinctly personal yet discreet appearance, and the purity of its subtle forms, with a cosmopolitan style.



Data sheet



Olos

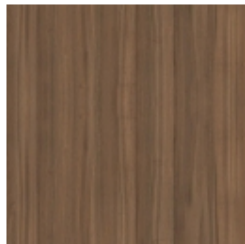
Width: 74cm

Depth: 74cm

Height: 74cm

Finishes

Frame

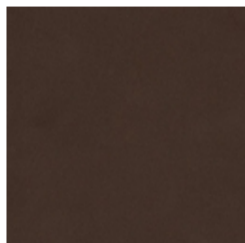


Veneered wood
Walnut Canaletto

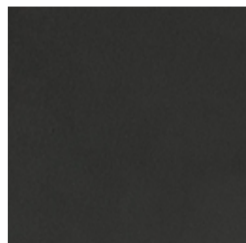


Veneered wood
Coal oak

Swivel base



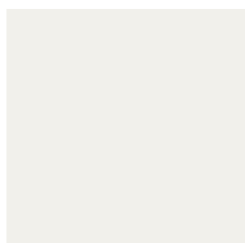
Painted metal
Mat bronze



Painted metal
Mat lead



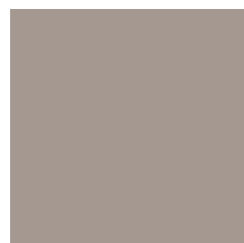
Painted metal
Mat pearl gold



Painted metal
Mat white



Painted metal
Mat black



Painted metal
Mat dove grey

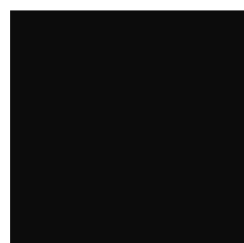
Painted metal
Supreme anthracite



Metal finish
Clouded chrome



Metal finish
Brown nickel



Metal finish
Dark nickel