

# **BONALDO**

## Padiglioni

Designer: Alain Gilles

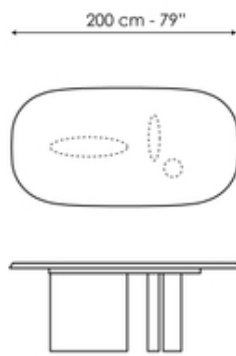


The Padiglioni table by Alain Gilles draws its inspiration from the iconic Barcelona pavilion designed by Mies van der Rohe. The focal point of this table is the base which is made up of three asymmetrical elements, each with a particular shape and placed in an apparently random position in order to make the composition visually dynamic. It is precisely because of the asymmetrical character of the base that anyone who looks at it closely will notice, as they move around the table, that it changes its appearance depending on the angle from which it is observed. The base is thus a significant part of the table, and accentuated by the top whose linear form with its tapered edge contrasts with the legs and completes the overall image.

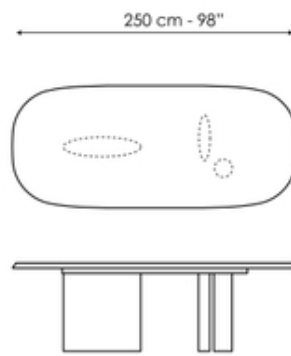
A story of skilfully achieved balances and contrasts that interact with each other, the Padiglioni asymmetrical dining table is the maximum expression both of Alain Gilles' creative ability and Bonaldo's production capability.



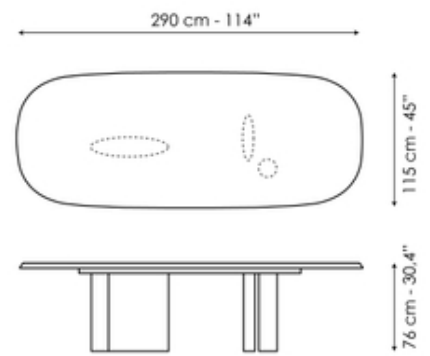
# Data sheet



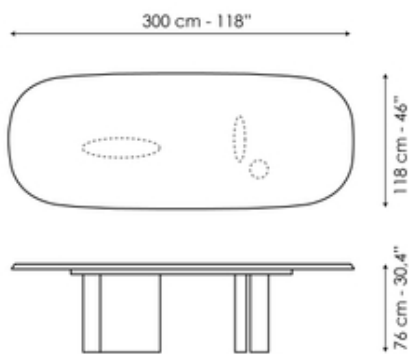
Width: 200cm  
Depth: 104cm  
Height: 76cm



Width: 250cm  
Depth: 108cm  
Height: 76cm



Width: 290cm  
Depth: 115cm  
Height: 76cm



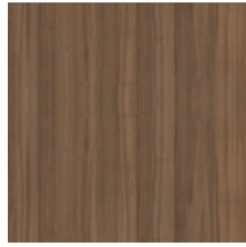
Width: 300cm  
Depth: 118cm  
Height: 76cm

# Finishes

## MONOMATERIAL - Top and Base



Veneered wood  
Brushed coal oak



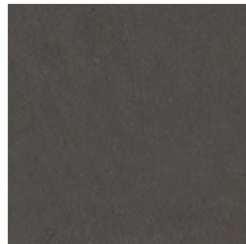
Veneered wood  
Walnut Canaletto



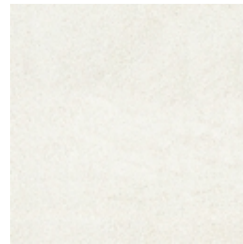
Veneered wood  
Brushed Grey oak



Clay finish and hand spatula effect  
Glacier



Clay finish and hand spatula effect  
Graphite



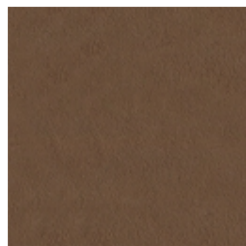
Clay finish and hand spatula effect  
Neige



Clay finish and hand spatula effect  
Perle



Clay finish and hand spatula effect  
Terracotta



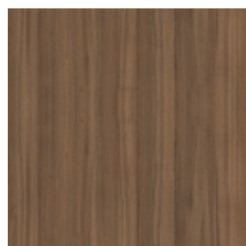
Clay finish and hand spatula effect  
Terre

---

## DOUBLE MATERIAL - Top



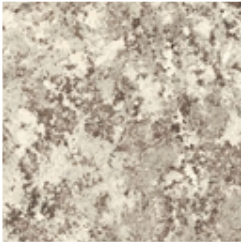
Veneered wood  
Brushed coal oak



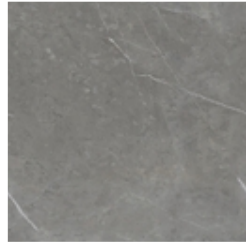
Veneered wood  
Walnut Canaletto



Veneered wood  
Brushed Grey oak



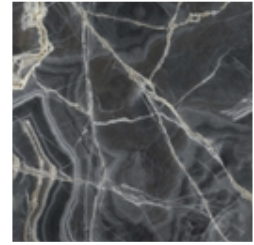
**Mat ceramic**  
Alaska White



**Mat ceramic**  
Ardesia grey



**Mat ceramic**  
Augusta



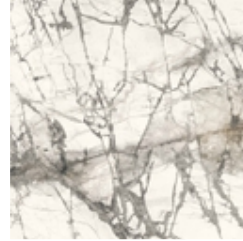
**Glossy ceramic**  
Black Onyx



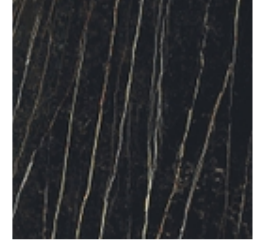
**Glossy ceramic**  
Calacatta



**Silk finish ceramic**  
Calacatta macchia vecchia



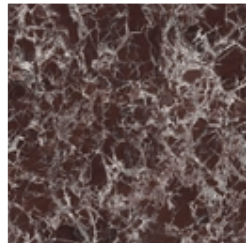
**Glossy ceramic**  
Imperial grey



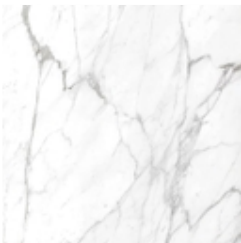
**Mat ceramic**  
Laurent



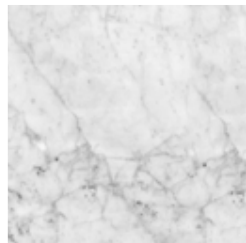
**Glossy ceramic**  
Mountain peak



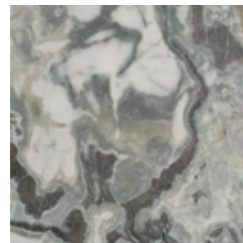
**Glossy ceramic**  
Rosso imperiale



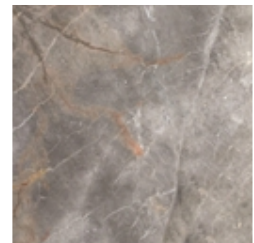
**Marble**  
Calacatta



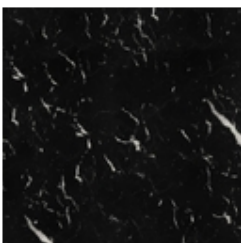
**Marble**  
Carrara



**Marble**  
Dover White



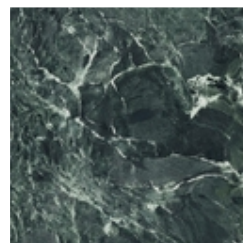
**Marble**  
Fior di bosco



**Marble**  
Marquinia



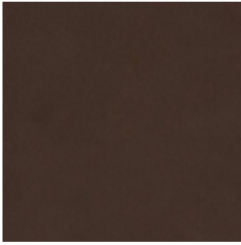
**Marble**  
Rosso Carpazi



**Marble**  
Saint Denis



**Marble**  
Travertino Romano



**Painted metal**  
Mat bronze



**Painted metal**  
Mat lead



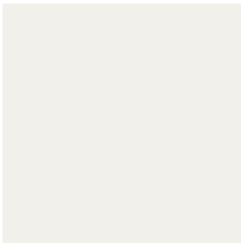
**Painted metal**  
Mat pearl gold



**Painted metal**  
Mat brass



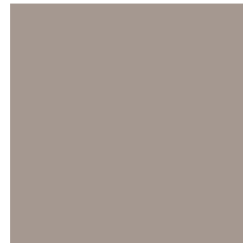
**Painted metal**  
Mat copper



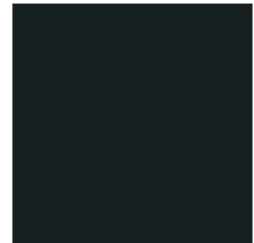
**Painted metal**  
Mat white



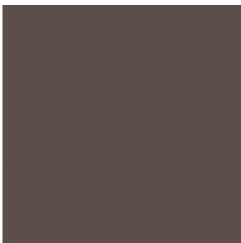
**Painted metal**  
Supreme anthracite



**Painted metal**  
Mat dove grey



**Painted metal**  
Mat black



**Painted metal**  
Mat brown



**Veneered wood**  
Brushed Grey oak



**Veneered wood**  
Brushed coal oak