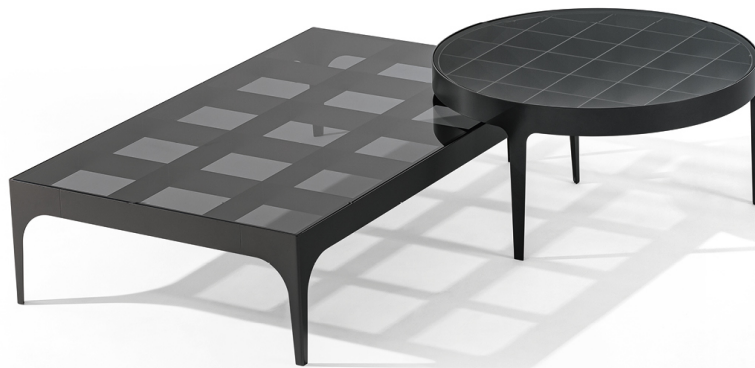


BONALDO

Passy

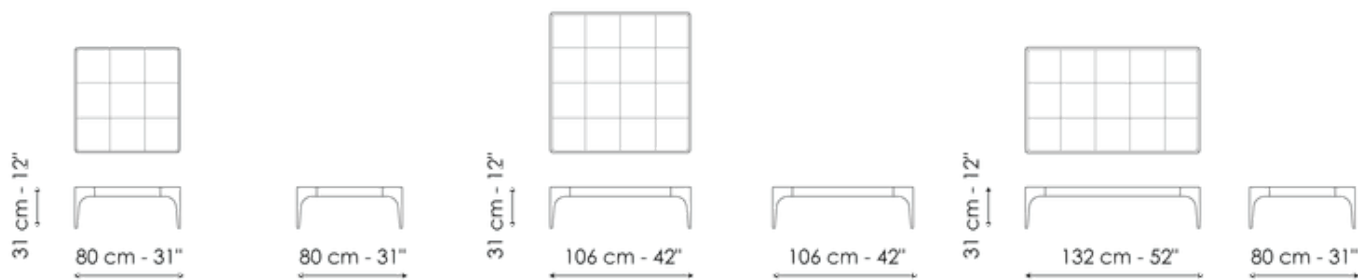
Designer: Fabrice Berrux



The style of the designer glass coffee tables designed by Fabrice Berrux sums up a discreet elegance that is both structural and functional at the same time while drawing attention to a number of sophisticated details, most noticeably, the metal "chess board" structure that can be glimpsed under the glass top. The designer glass coffee table is available in different formats including square, rectangular and circular, which allow you to create countless furnishing solutions and combinations.



Data sheet



Passy 80x80

Width: 80cm

Depth: 80cm

Height: 31cm

Passy 106x106

Width: 106cm

Depth: 106cm

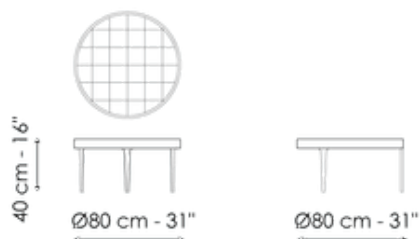
Height: 31cm

Passy 132x80

Width: 132cm

Depth: 80cm

Height: 31cm



Passy Ø80

Width: 80cm

Depth: 80cm

Height: 40cm

Finishes

Top

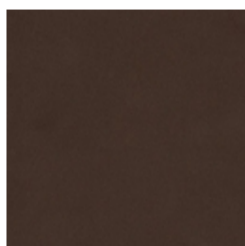


Glass
Bronzed

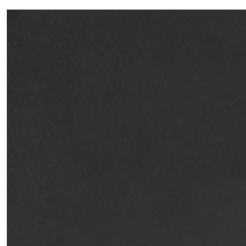


Glass
Smoked

Base



Painted metal
Mat bronze



Painted metal
Mat lead

Materials, fabrics, leathers, colors and finishes are approximate and may slightly differ from actual ones. You can find the complete collection of Bonaldo fabrics and leathers on the website <https://bonaldo.biz>