

# **BONALDO**

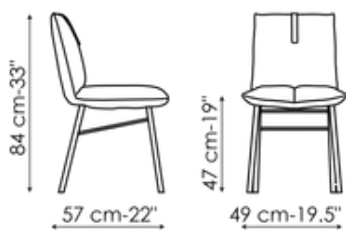
## Pil, Pil up, Miss Pil, Miss Pil up



Pil is a collection inspired by the object that is itself a symbol of softness, the pillow. Usually interpreted as an accessory, here the pillow plays the starring role, shaped and adapted to create a chair that conveys comfort and relaxation. The main components of the Pil soft chair are the backrest cushion and the seat cushion. The latter features a fold in the middle, created to generate an enveloping effect that physically and visually emphasises the feeling of softness. The base consists of metal legs, with the crossbars set at a special angle, to create an original graphic interweaving effect. Available in different versions: Pil, Pil up (with higher backrest), Miss Pil (with armrests), Miss Pil up (with higher backrest and armrests), Pil too (stool), Pil armchair and Pil armchair hi.

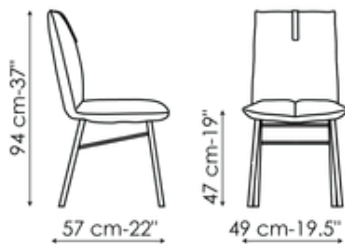


# Data sheet



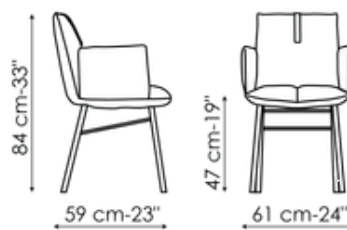
## Pil

Width: 49cm  
Depth: 57cm  
Height: 84cm



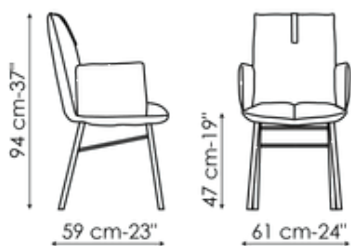
## Pil up

Width: 49cm  
Depth: 57cm  
Height: 94cm



## Miss Pil

Width: 61cm  
Depth: 59cm  
Height: 84cm

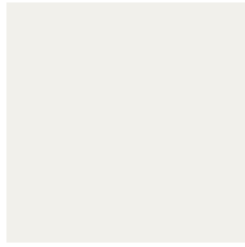


## Miss Pil up

Width: 61cm  
Depth: 59cm  
Height: 94cm

# Finishes

## Legs



**Painted metal**  
Mat white



**Painted metal**  
Mat dove grey

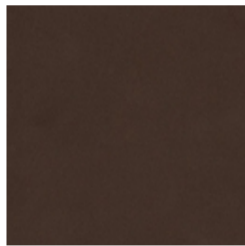


**Painted metal**  
Mat brown

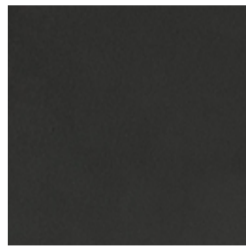
**Painted metal**  
Supreme anthracite



**Painted metal**  
Mat black



**Painted metal**  
Mat bronze



**Painted metal**  
Mat lead



**Painted metal**  
Mat copper



**Painted metal**  
Mat brass

---

Materials, fabrics, leathers, colors and finishes are approximate and may slightly differ from actual ones. You can find the complete collection of Bonaldo fabrics and leathers on the website <https://bonaldo.biz>