

BONALDO

Vague bookshelf

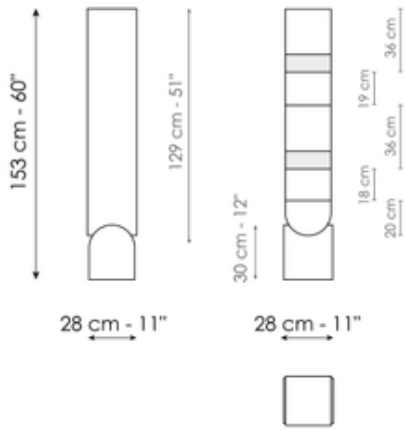
Designer: Roberto Paoli



Like the other members of the family, the Vague bookshelf is characterized by the combination of concrete and metal. The metal frame rests on the concrete base and rises vertically like a totem on which several shelves are mounted at different heights to accommodate objects or books. Thanks to its variable height and reduced dimensions, the Vague bookshelf is versatile and can be positioned in a number of places within the house, either individually or in multiple elements placed side by side.



Data sheet



Vague bookshelf

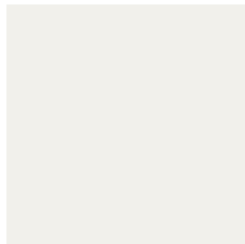
Width: 28cm

Depth: 28cm

Height: 153cm

Finishes

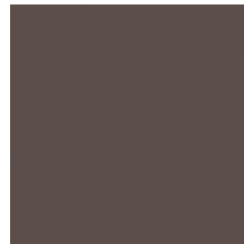
Frame



Painted metal
Mat white

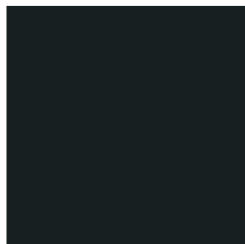


Painted metal
Mat dove grey

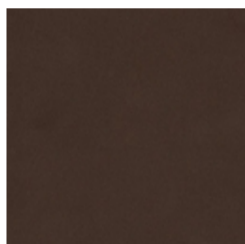


Painted metal
Mat brown

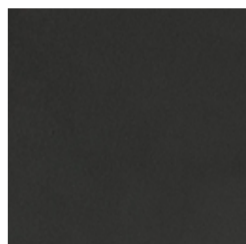
Painted metal
Supreme anthracite



Painted metal
Mat black



Painted metal
Mat bronze



Painted metal
Mat lead



Painted metal
Mat copper



Painted metal
Mat brass

Base



Concrete
Grey



Concrete
Travertin look