

BONALDO

Vague coffee table

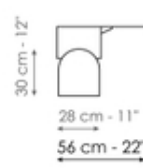
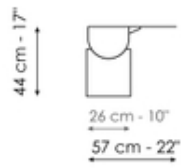
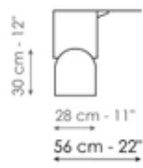
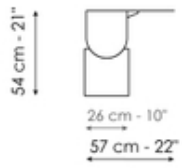
Designer: Roberto Paoli



The Vague coffee table is a sculptural element that enriches the living area. The concrete base raises the metal upper section, which is available in different colours, in both a physical and figurative sense. The support top, with a curved and flowing shape that is similar to a raindrop, is ideal for placing near the sofa. The proportions of the tops make the tables pleasantly decorative as well as functional island elements within the living space. The Vague coffee table is available in both high and low versions, which can be combined with each other.



Data sheet



Vague coffee table high

Width: 57cm

Depth: 56cm

Height: 51cm

Vague coffee table low

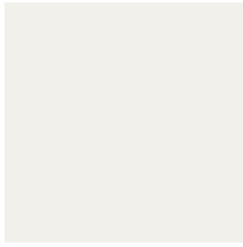
Width: 57cm

Depth: 56cm

Height: 44cm

Finishes

Top



Painted metal
Mat white



Painted metal
Mat dove grey



Painted metal
Mat brown

Painted metal
Supreme anthracite



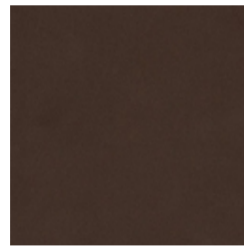
Painted metal
Mat black



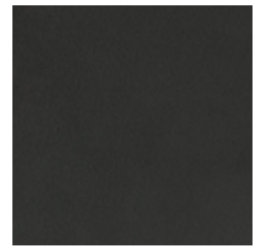
Painted metal
Mat brass



Painted metal
Mat copper



Painted metal
Mat bronze



Painted metal
Mat lead



Painted metal
Mat pearl gold

Base



Concrete
Travertin look



Concrete
Grey

Materials, fabrics, leathers, colors and finishes are approximate and may slightly differ from actual ones. You can find the complete collection of Bonaldo fabrics and leathers on the website <https://bonaldo.biz>